

Detectors

passive infrared receiver



KX15ED

COMMERCIAL / RESIDENTIAL

Dual Element PIR Detector

Main Features

- Dual Element Pyro-electric Sensor
- Selectable EOL (End Of Line) Resistors
- 15m Volumetric coverage
- Patented Independent Floating Thresholds (IFT)
- Adjustable sensitivity settings
- Automatic Temperature Compensation
- Multi-Angular LED Indication
- Sealed Optics
- Tamper Proof Brackets Included
- ABS Plastics

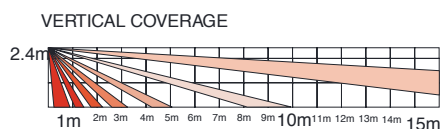
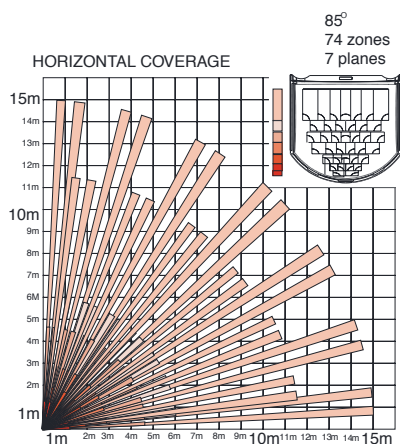
Product Features

Features	Description	Benefits
Selectable EOL Resistors	The KX15ED incorporates selectable alarm resistor values of 6K8, 5K6, 4K7 & 1K & tamper values of 5K6, 4K7, 2K2 and 1K catering for most control panels on the market.	Completely eliminates the need for separate resistors, therefore reducing installation time.
Patented Independent Floating Thresholds (IFT)	This technology patented by Pyronix allows the detector to respond to the environmental changes by automatically adjusting its levels of immunity to background disturbances.	Greater stability, reduces risk of false alarm activations
Adjustable sensitivity settings	Higher sensitivity for use in areas where fast detection is required. Adjustable sensitivity settings for installations in a more hostile environment.	Ensures suitability for most environments
Automatic Temperature Compensation	When the product is used in a hot environment this technology automatically adjusts the detector's sensitivity allowing it to maintain its range even when the background room temperature is almost equal to the external body temperature of 32°C (Internal body Temperature = 37°C)	Guarantees optimum performance at all times
Tamper Proof Brackets	Supplied with both wall & ceiling mount brackets which provides access for up to two 8 core cables (Tamper kit optional)	Allows ease of installation whilst enhancing tamper protection
Multi-angular LED Indication	A clear plastic pipe channels the light from the LED to the face of the detector making the LED indication highly visible from a multitude of angles.	Enables walk testing to be undertaken with ease and accuracy ensuring the detector covers the desired area.
Sealed Optics	Protects from possible infestation from insects, shields air movement in front of the pyro electric sensor and protects against adverse reflections from inside the detector housing.	Enhances the focus of the pyro-electric sensor
ABS Plastics	3mm polished finish, reduces electrostatic interference on the PIR sensor.	Easy to clean, retains white finish.

Lens Coverage

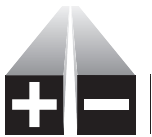
Supplied

15m Volumetric



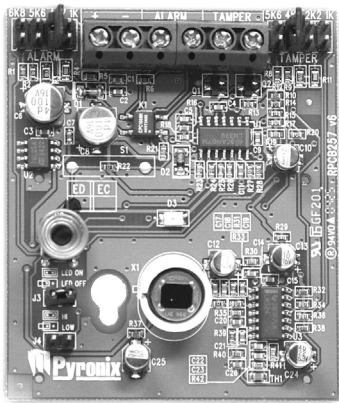
Pyronix Dual Element

The KX15ED has a pyro-electric sensor containing two sensing elements and when projected through a lens form zones as illustrated on the right. In order for an alarm to be triggered one or more of these zones would need to be crossed.

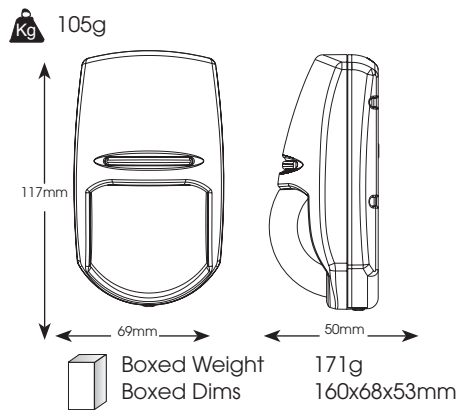


Technical Specification

ELECTRICAL	
Operating Voltage	9 - 16VDC (12V nominal)
Current Consumption - No Alarm State	11mA (12V nominal)
Current Consumption - Alarm State	13mA (12V nominal)
Relay	Solid State
Relay Output	60VDC, 50mA, Protected
Tamper Switch	12V max, 50mA max
RFI Immunity to Continuous Wave (CW) 80-2000MHz	75V/m
RFI Immunity to Amplitude Modulation (AM) 80-2000MHz	25 V/m
RFI Immunity to Pulse Modulation (PM) 80-2000MHz	25 V/m
OPERATING FEATURES	
Alarm period of	2.5 seconds
Detection Speed	0.3 - 3m/s
Operating Temperature	-30°C to +70°C
Storage Temperature	-40°C to +80°C
OPTICAL	
White Light Filter	6500 Lux
Optics	Sealed
Lens	3 Dimensional
Protection	Ultraviolet Light Filter
MOUNTING	
Optimum Coverage Height	1.8-2.4m

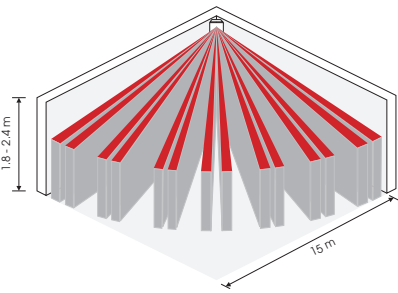


Weights & Dimensions



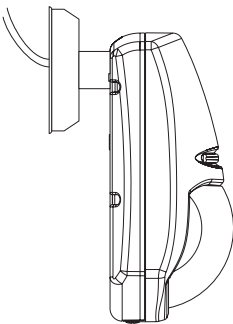
Applications

Volumetric

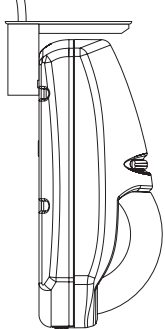


Brackets

Wall Bracket



Ceiling Bracket



COMPLIANCE		PYRONIX PRODUCT CODE
Europe	CE	FPKX15ED
Belgium / Holland	INCERT	FPKX15EDB

PACKING INFORMATION		ACCESSORIES	PYRONIX PRODUCT CODE
Min Pack:	10	K-TAMPER	FP16310
Pack Weight:	1.71kg		
Warranty:	5 Years		
Manufactured:	UK		