

# 63F3 SHEET

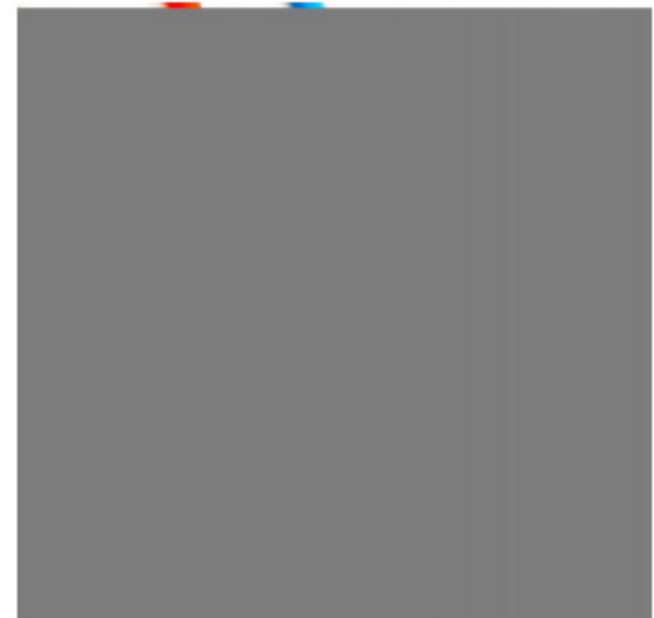


† "Œ# e'h 'O

- Available in 0.5m, 1m and 2m (packs of 5)
- Available in 3m or 5m individually
- Available in all sizes in GREY, RED or BLUE

## Features

- 8p8c - The 8 position 8 contact connector is a modular connector commonly used to terminate twisted pair and multi-conductor Cat5e cable.
- 26 AWG
- Moulded, snagless boot
- Gold plated connectors
- PVC cable jacket
- EIA/TIA -568B wiring colour code
- 350 Mhz
- Warranty : Limited Lifetime



h #

Length	0.5m (5 PK)	1m (5 PK)	2m (5 PK)	3m (1 PK)	5m (1 PK)
Weight kg	0.05	0.14	0.22	0.065	0.11
8	WBXC5EGY0.5MP5	WBXC5EGY MP5	WBXC5EGY MP5	WBXC5EGY MP	WBXC5EGY MP
k	WBXC5ERD0.5MP5	WBXC5ERD MP5	WBXC5ERD MP5	WBXC5ERD MP	WBXC5ERD MP
"	WBXC5EBL0.5MP5	WBXC5EBL MP5	WBXC5EBL MP5	WBXC5EBL MP	WBXC5EBL MP

